



ATHLETIC FACILITIES

POLE VAULT LANDING AREAS

- 1670 Pole Vault Landing Area
- 1700 Pole Vault Landing Area
- 1750 Pole Vault Landing Area
- 1790 Pole Vault Landing Area
- 1800 Pole Vault Landing Area
- 1900 Pole Vault Landing Area
- 1950 Pole Vault Landing Area
- 2100 Pole Vault Landing Area
- 2200 Pole Vault Landing Area

MODEL 1670 6.1M X 6.2M X 71CM
(20' X 20'6" X 28")

*503-1676 WEATHER COVER FITTED FOR
1670 POLE VAULT LANDING AREA



Pit Measures 5m (16'5") Behind Plant Box

Width Behind and in front of Standards Remains 20'-No other company Manufactures this size with this feature- increases safety in the front of the pit and around Standards

Lifetime Guarantee: All handles and straps. Handles are 2 inch 3500 T.C. nylon webbing encased in 21 oz. vinyl knife coated fabric. Handles are sewn to side of pit below zipper flap. Triple reinforced.

15 year Guarantee: On seams and hems against defective material and workmanship.

Angulax 3013 - with exclusive integration system allows front units to be placed on the box collar, providing an angle that accommodates maximum pole bend and a level landing area. Patent pending vault box collar system integration with all UCS landing areas, features a cut-out for placing the box collar, the front units, and extensions allow for a flat landing area that is exclusive to UCS.

UCS Vinyl Material: Sides and Bottoms of all units manufactured out of 21oz knife coated vinyl composed of 5 oz. 840 denier nylon with a 23x23 construction and 16oz of liquid coated urethane that is spread over one side of the nylon material. Results in a 37 oz equivalent that has the highest tear strength in the industry and the most vinyl on the exposed side.

Seams and hems: Double stitched, double folded and double stitched again with high tenacity 232 polyester thread, with at least 5 stitches to the inch and no more than 6 stitches

Foam Construction: New honeycomb urethane foam combines three densities and three compressions in unique lattice configuration.

VTX 1000 System: New Exclusive 8" wide Velcro holds base units and front units together. Takes stress off the Top Pad. NO UCS LANDING AREA uses a "Skirted Breather Fabric Top" to hold all components together.

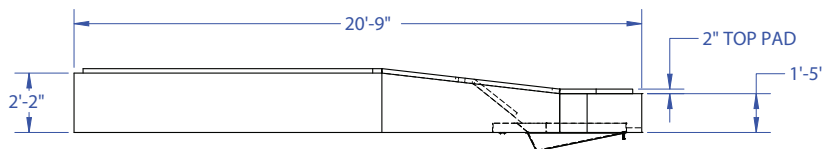
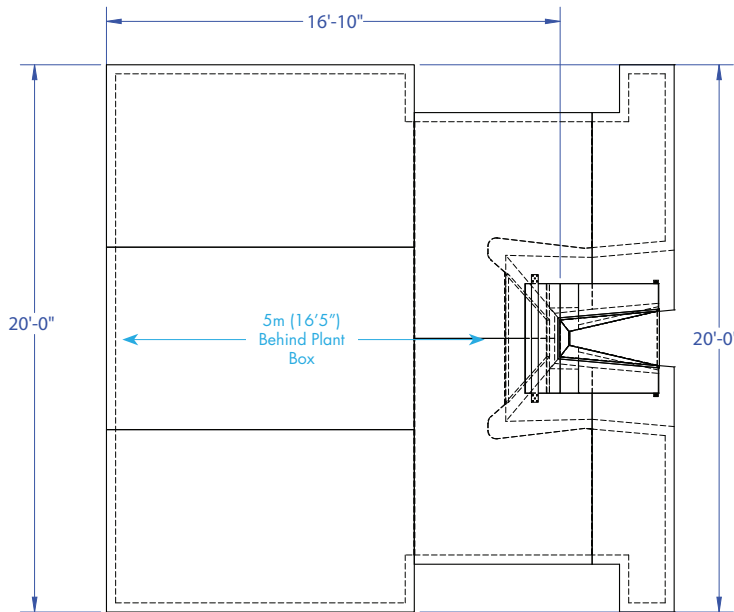
Spike resistant breather fabric: 1000 denier 14 x 12 PVC extruded fabric.

2-inch Foam Top Pad is Standard: Holds entire pit securely in place. Provides safe comfortable landings. Prevents landing between the units.

Coaches Box: 8' x 10' area in contrasting color is sewn onto top pad. Full inner portion of front units highlighted in white to enhance planting area.

Color Option (s): All UCS Landing Areas are available in Red, Purple, Green, Blue, Maroon, Magenta, Orange, Burnt Orange, Yellow/Gold, & Black at no extra Charge.

Meets or exceeds all NFHS Regulations.



Vinyl Mesh Colors for Landing Areas, Weather Covers, and Base Protection



PROPRIETARY & CONFIDENTIAL
THE INFORMATION CONTAINED ON THIS PAGE IS THE SOLE PROPERTY OF UCS, INC. ANY REPRODUCTION IN PART, OR AS A WHOLE, WITHOUT THE WRITTEN PERMISSION OF UCS, INC., IS PROHIBITED.

1670 POLE VAULT LANDING AREA

ENGINEERED, DESIGNED, AND CONSTRUCTED TO ENSURE A UCS PERFECT FIT.

UCS[®]

MODEL 1700 6.6M X 7.3M X 71CM
(21'6" X 24' X 28")

*503-1712 WEATHER COVER FITTED FOR
1700 POLE VAULT LANDING AREA



Pit Measures 18'4" Behind Plant Box

Lifetime Guarantee: All handles and straps. Handles are 2 inch 3500 T.C. nylon webbing encased in 21 oz. vinyl knife coated fabric. Handles are sewn to side of pit below zipper flap. Triple reinforced.

15 year Guarantee: On seams and hems against defective material and workmanship.

Angulax 3013 - with exclusive integration system allows front units to be placed on the box collar, providing an angle that accommodates maximum pole bend and a level landing area. Patent pending vault box collar system integration with all UCS landing areas, features a cut-out for placing the box collar, the front units, and extensions allow for a flat landing area that is exclusive to UCS.

UCS Vinyl Material: Sides and Bottoms of all units manufactured out of 21oz knife coated vinyl composed of 5 oz. 840 denier nylon with a 23x23 construction and 16oz of liquid coated urethane that is spread over one side of the nylon material. Results in a 37 oz equivalent that has the highest tear strength in the industry and the most vinyl on the exposed side.

Seams and hems: Double stitched, double folded and double stitched again with high tenacity 232 polyester thread, with at least 5 stitches to the inch and no more than 6 stitches

Foam Construction: New honeycomb urethane foam combines three densities and three compressions in unique lattice configuration.

VTX 1000 System: New Exclusive 8" wide Velcro holds base units and front units together. Takes stress off the Top Pad. NO UCS LANDING AREA uses a "Skirted Breather Fabric Top" to hold all components together.

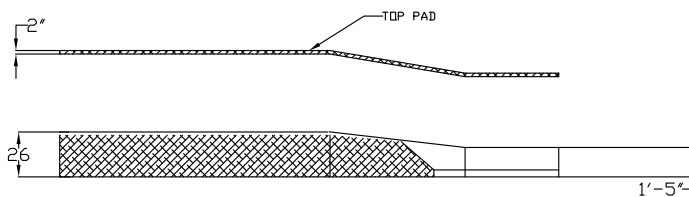
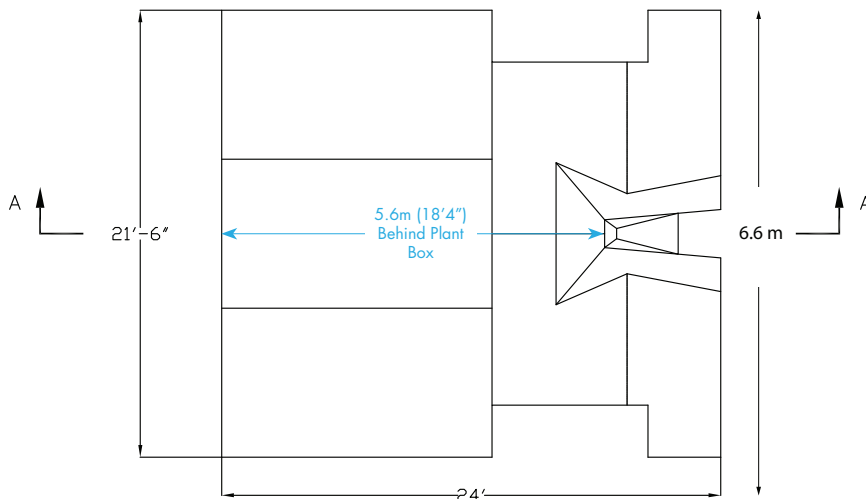
Spike resistant breather fabric: 1000 denier 14 x 12 PVC extruded fabric.

2-inch Foam Top Pad is Standard: Holds entire pit securely in place. Provides safe comfortable landings. Prevents landing between the units.

Coaches Box: 8' x 10' area in contrasting color is sewn onto top pad. Full inner portion of front units highlighted in white to enhance planting area.

Color Option (s): All UCS Landing Areas are available in Red, Purple, Green, Blue, Maroon, Magenta, Orange, Burnt Orange, Yellow/Gold, & Black at no extra Charge.

Meets NFHS Regulations.



SECTION A-A

VinylMeshColorsforLandingAreas,WeatherCovers,andBaseProtectionPads



PROPRIETARY & CONFIDENTIAL
THE INFORMATION CONTAINED ON THIS PAGE IS THE SOLE PROPERTY OF UCS, INC. ANY REPRODUCTION IN PART, OR AS A WHOLE, WITHOUT THE WRITTEN PERMISSION OF UCS, INC., IS PROHIBITED.

1700 POLE VAULT LANDING AREA

ENGINEERED, DESIGNED, AND CONSTRUCTED TO ENSURE A UCS PERFECT FIT.

**MODEL 1750 6.1M X 7M X 71CM
(20' X 23' X 28")**

*503-1756 WEATHER COVER FITTED FOR
1750 POLE VAULT LANDING AREA



Pit Measures 5.28m (17'4") Behind Plant Box

Lifetime Guarantee: All handles and straps. Handles are 2 inch 3500 T.C. nylon webbing encased in 21 oz. vinyl knife coated fabric. Handles are sewn to side of pit below zipper flap. Triple reinforced.

15 year Guarantee: On seams and hems against defective material and workmanship.

Angulax 3013 - with exclusive integration system allows front units to be placed on the box collar, providing an angle that accommodates maximum pole bend and a level landing area. Patent pending vault box collar system integration with all UCS landing areas, features a cut-out for placing the box collar, the front units, and extensions allow for a flat landing area that is exclusive to UCS.

UCS Vinyl Material: Sides and Bottoms of all units manufactured out of 21oz knife coated vinyl composed of 5 oz. 840 denier nylon with a 23x23 construction and 16oz of liquid coated urethane that is spread over one side of the nylon material. Results in a 37 oz equivalent that has the highest tear strength in the industry and the most vinyl on the exposed side.

Seams and hems: Double stitched, double folded and double stitched again with high tenacity 232 polyester thread, with at least 5 stitches to the inch and no more than 6 stitches

Foam Construction: New honeycomb urethane foam combines three densities and three compressions in unique lattice configuration.

VTX 1000 System: New Exclusive 8" wide Velcro holds base units and front units together. Takes stress off the Top Pad. NO UCS LANDING AREA uses a "Skirted Breather Fabric Top" to hold all components together.

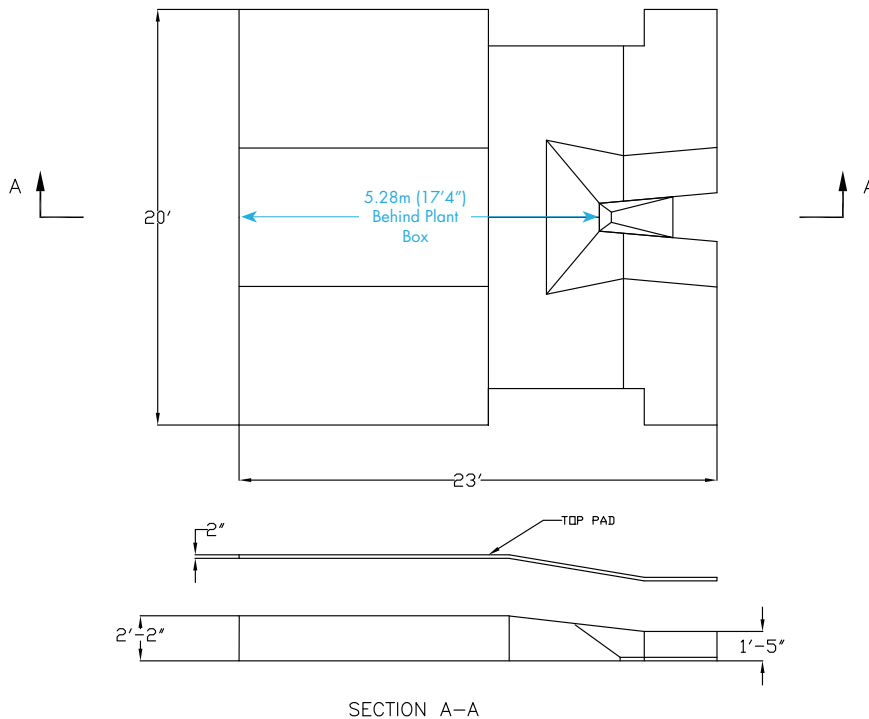
Spike resistant breather fabric: 1000 denier 14 x 12 PVC extruded fabric.

2-inch Foam Top Pad is Standard: Holds entire pit securely in place. Provides safe comfortable landings. Prevents landing between the units.

Coaches Box: 8' x 10' area in contrasting color is sewn onto top pad. Full inner portion of front units highlighted in white to enhance planting area.

Color Option (s): All UCS Landing Areas are available in Red, Purple, Green, Blue, Maroon, Magenta, Orange, Burnt Orange, Yellow/Gold, & Black at no extra Charge.

Meets or exceeds all NFHS Regulations.



VinylMeshColorsforLandingAreas,WeatherCovers,andBaseProtectionPads



PROPRIETARY & CONFIDENTIAL
THE INFORMATION CONTAINED ON THIS PAGE IS THE SOLE PROPERTY OF UCS, INC. ANY REPRODUCTION IN PART, OR AS A WHOLE, WITHOUT THE WRITTEN PERMISSION OF UCS, INC., IS PROHIBITED.

1750 POLE VAULT LANDING AREA

ENGINEERED, DESIGNED, AND CONSTRUCTED TO ENSURE A UCS PERFECT FIT.

UCS[®]

**MODEL 1790 6.1M X 7M X 81CM
(20' X 23' X 32")**

*503-1796 WEATHER COVER FITTED FOR
1790 POLE VAULT LANDING AREA



Pit Measures 5.28m (17'4") Behind Plant Box

Lifetime Guarantee: All handles and straps. Handles are 2 inch 3500 T.C. nylon webbing encased in 21 oz. vinyl knife coated fabric. Handles are sewn to side of pit below zipper flap. Triple reinforced.

15 year Guarantee: On seams and hems against defective material and workmanship.

Angulax 3013 - with exclusive integration system allows front units to be placed on the box collar, providing an angle that accommodates maximum pole bend and a level landing area. Patent pending vault box collar system integration with all UCS landing areas, features a cut-out for placing the box collar, the front units, and extensions allow for a flat landing area that is exclusive to UCS.

UCS Vinyl Material: Sides and Bottoms of all units manufactured out of 21oz knife coated vinyl composed of 5 oz. 840 denier nylon with a 23x23 construction and 16oz of liquid coated urethane that is spread over one side of the nylon material. Results in a 37 oz equivalent that has the highest tear strength in the industry and the most vinyl on the exposed side.

Seams and hems: Double stitched, double folded and double stitched again with high tenacity 232 polyester thread, with at least 5 stitches to the inch and no more than 6 stitches

Foam Construction: New honeycomb urethane foam combines three densities and three compressions in unique lattice configuration.

VTX 1000 System: New Exclusive 8" wide Velcro holds base units and front units together. Takes stress off the Top Pad. NO UCS LANDING AREA uses a "Skirted Breather Fabric Top" to hold all components together.

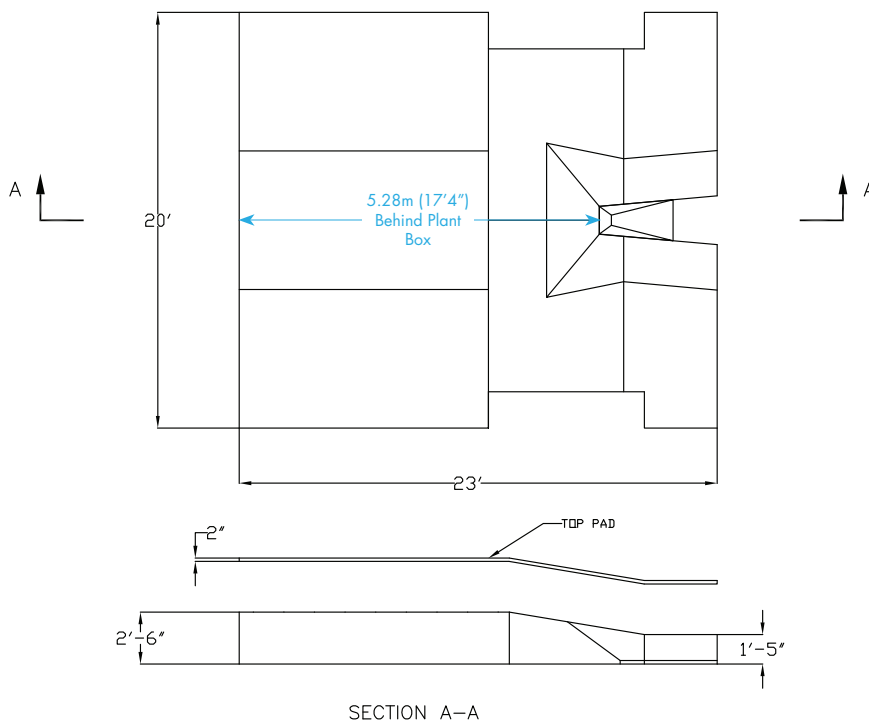
Spike resistant breather fabric: 1000 denier 14 x 12 PVC extruded fabric.

2-inch Foam Top Pad is Standard: Holds entire pit securely in place. Provides safe comfortable landings. Prevents landing between the units.

Coaches Box: 8' x 10' area in contrasting color is sewn onto top pad. Full inner portion of front units highlighted in white to enhance planting area.

Color Option (s): All UCS Landing Areas are available in Red, Purple, Green, Blue, Maroon, Magenta, Orange, Burnt Orange, Yellow/Gold, & Black at no extra Charge.

Meets or exceeds all NFHS Regulations.



VinylMeshColorsforLandingAreas,WeatherCovers,andBaseProtectionPads



PROPRIETARY & CONFIDENTIAL
THE INFORMATION CONTAINED ON THIS PAGE IS THE SOLE PROPERTY OF UCS, INC. ANY REPRODUCTION IN PART, OR AS A WHOLE, WITHOUT THE WRITTEN PERMISSION OF UCS, INC., IS PROHIBITED.

1790 POLE VAULT LANDING AREA

ENGINEERED, DESIGNED, AND CONSTRUCTED TO ENSURE A UCS PERFECT FIT.

UCS[®]

MODEL 1800 6.6M X 7.3M X 81CM
(21'6" X 24' X 32")

*503-1812 WEATHER COVER FITTED FOR
1800 POLE VAULT LANDING AREA



Pit Measures 5.6m (18'4") Behind Plant Box

Lifetime Guarantee: All handles and straps. Handles are 2 inch 3500 T.C. nylon webbing encased in 21 oz. vinyl knife coated fabric. Handles are sewn to side of pit below zipper flap. Triple reinforced.

15 year Guarantee: On seams and hems against defective material and workmanship.

Angulax 3013 - with exclusive integration system allows front units to be placed on the box collar, providing an angle that accommodates maximum pole bend and a level landing area. Patent pending vault box collar system integration with all UCS landing areas, features a cut-out for placing the box collar, the front units, and extensions allow for a flat landing area that is exclusive to UCS.

UCS Vinyl Material: Sides and Bottoms of all units manufactured out of 21oz knife coated vinyl composed of 5 oz. 840 denier nylon with a 23x23 construction and 16oz of liquid coated urethane that is spread over one side of the nylon material. Results in a 37 oz equivalent that has the highest tear strength in the industry and the most vinyl on the exposed side.

Seams and hems: Double stitched, double folded and double stitched again with high tenacity 232 polyester thread, with at least 5 stitches to the inch and no more than 6 stitches

Foam Construction: New honeycomb urethane foam combines three densities and three compressions in unique lattice configuration.

VTX 1000 System: New Exclusive 8" wide Velcro holds base units and front units together. Takes stress off the Top Pad. NO UCS LANDING AREA uses a "Skirted Breather Fabric Top" to hold all components together.

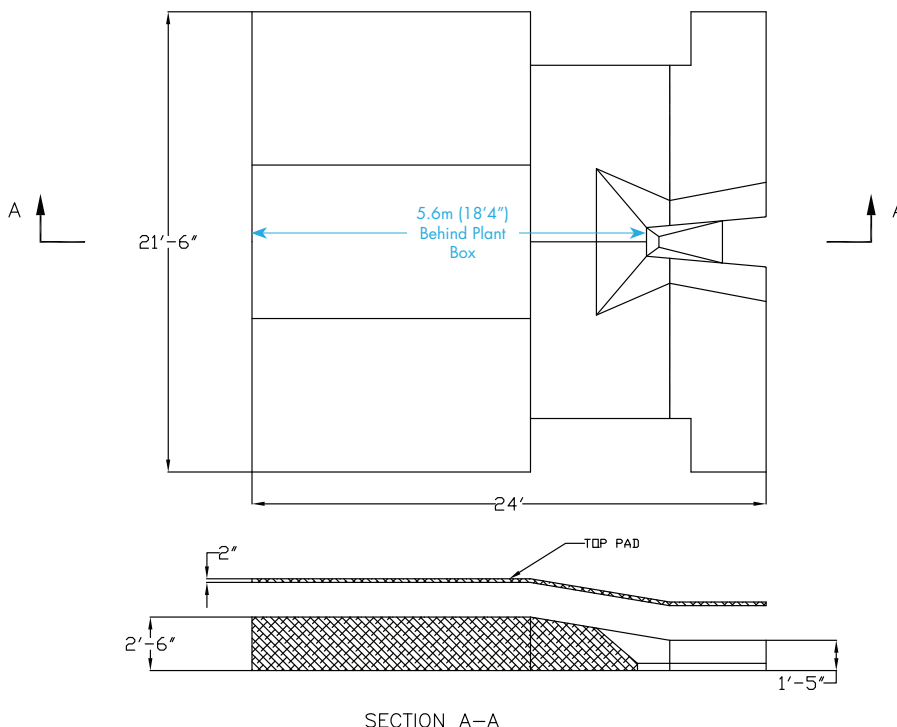
Spike resistant breather fabric: 1000 denier 14 x 12 PVC extruded fabric.

2-inch Foam Top Pad is Standard: Holds entire pit securely in place. Provides safe comfortable landings. Prevents landing between the units.

Coaches Box: 8' x 10' area in contrasting color is sewn onto top pad. Full inner portion of front units highlighted in white to enhance planting area.

Color Option (s): All UCS Landing Areas are available in Red, Purple, Green, Blue, Maroon, Magenta, Orange, Burnt Orange, Yellow/Gold, & Black at no extra Charge.

Meets NFHS and NCAA Regulations.



VinylMeshColorsforLandingAreas,WeatherCovers,andBaseProtectionPads



PROPRIETARY & CONFIDENTIAL
THE INFORMATION CONTAINED ON THIS PAGE IS THE SOLE PROPERTY OF UCS, INC. ANY REPRODUCTION IN PART, OR AS A WHOLE, WITHOUT THE WRITTEN PERMISSION OF UCS, INC., IS PROHIBITED.

1800 POLE VAULT LANDING AREA

ENGINEERED, DESIGNED, AND CONSTRUCTED TO ENSURE A UCS PERFECT FIT.

UCS[®]

MODEL 1900 6.6M X 8.25M X 81CM
(21'6" X 27' X 32")

*503-1912 WEATHER COVER FITTED FOR
1900 POLE VAULT LANDING AREA



Pit Measures 5.6m (18'4") Behind Plant Box
World Athletics Certificate: E-99-0069

Lifetime Guarantee: All handles and straps. Handles are 2 inch 3500 T.C. nylon webbing encased in 21 oz. vinyl knife coated fabric. Handles are sewn to side of pit below zipper flap. Triple reinforced.

15 year Guarantee: On seams and hems against defective material and workmanship.

Angulax 3013 - with exclusive integration system allows front units to be placed on the box collar, providing an angle that accommodates maximum pole bend and a level landing area. Patent pending vault box collar system integration with all UCS landing areas, features a cut-out for placing the box collar, the front units, and extensions allow for a flat landing area that is exclusive to UCS.

UCS Vinyl Material: Sides and Bottoms of all units manufactured out of 21oz knife coated vinyl composed of 5 oz. 840 denier nylon with a 23x23 construction and 16oz of liquid coated urethane that is spread over one side of the nylon material. Results in a 37 oz equivalent that has the highest tear strength in the industry and the most vinyl on the exposed side.

Seams and hems: Double stitched, double folded and double stitched again with high tenacity 232 polyester thread, with at least 5 stitches to the inch and no more than 6 stitches

Foam Construction: New honeycomb urethane foam combines three densities and three compressions in unique lattice configuration.

VTX 1000 System: New Exclusive 8" wide Velcro holds base units and front units together. Takes stress off the Top Pad. NO UCS LANDING AREA uses a "Skirted Breather Fabric Top" to hold all components together.

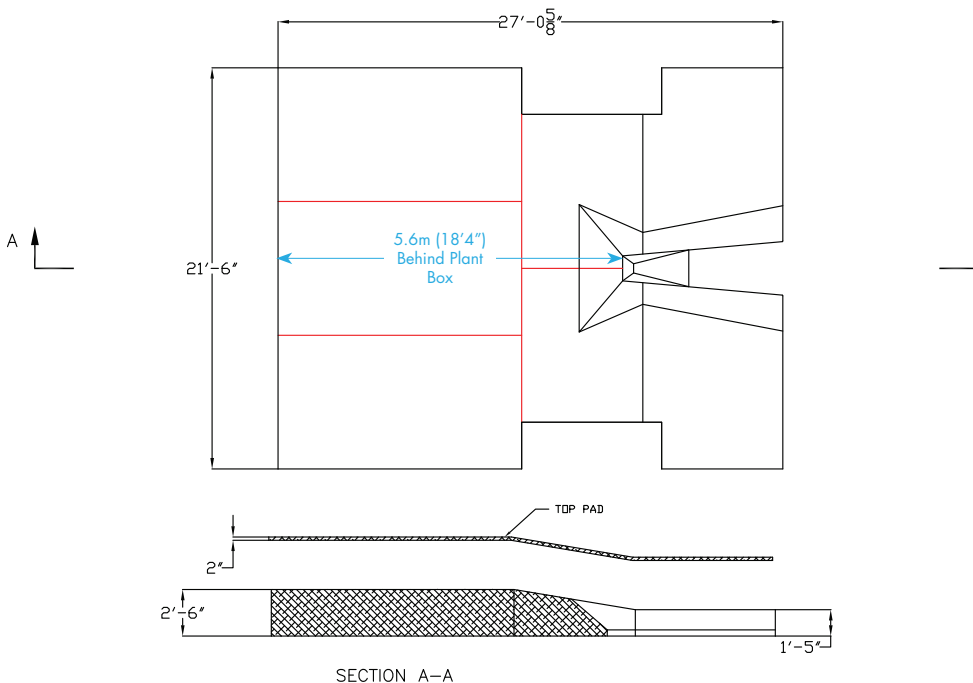
Spike resistant breather fabric: 1000 denier 14 x 12 PVC extruded fabric.

2-inch Foam Top Pad is Standard: Holds entire pit securely in place. Provides safe comfortable landings. Prevents landing between the units.

Coaches Box: 8' x 10' area in contrasting color is sewn onto top pad. Full inner portion of front units highlighted in white to enhance planting area.

Color Option (s): All UCS Landing Areas are available in Red, Purple, Green, Blue, Maroon, Magenta, Orange, Burnt Orange, Yellow/Gold, & Black at no extra Charge.

Meets NFHS, NCAA, Regulations and is World Athletics Certified.



VinylMeshColorsforLandingAreas,WeatherCovers,andBaseProtectionPads



PROPRIETARY & CONFIDENTIAL
THE INFORMATION CONTAINED ON THIS PAGE IS THE SOLE PROPERTY OF UCS, INC. ANY REPRODUCTION IN PART, OR AS A WHOLE, WITHOUT THE WRITTEN PERMISSION OF UCS, INC., IS PROHIBITED.

1900 POLE VAULT LANDING AREA

ENGINEERED, DESIGNED, AND CONSTRUCTED TO ENSURE A UCS PERFECT FIT.



MODEL 1950 6.6M X 9.144 M X 81CM
(21'6" X 30' X 32")

*503-2052 WEATHER COVER FITTED FOR
1950 POLE VAULT LANDING AREA

Pit Measures 6.5m (21'4") Behind Plant Box

Lifetime Guarantee: All handles and straps. Handles are 2 inch 3500 T.C. nylon webbing encased in 21 oz. vinyl knife coated fabric. Handles are sewn to side of pit below zipper flap. Triple reinforced.

15 year Guarantee: On seams and hems against defective material and workmanship.

Angulax 3013 - with exclusive integration system allows front units to be placed on the box collar, providing an angle that accommodates maximum pole bend and a level landing area. Patent pending vault box collar system integration with all UCS landing areas, features a cut-out for placing the box collar, the front units, and extensions allow for a flat landing area that is exclusive to UCS.

UCS Vinyl Material: Sides and Bottoms of all units manufactured out of 21oz knife coated vinyl composed of 5 oz. 840 denier nylon with a 23x23 construction and 16oz of liquid coated urethane that is spread over one side of the nylon material. Results in a 37 oz equivalent that has the highest tear strength in the industry and the most vinyl on the exposed side.

Seams and hems: Double stitched, double folded and double stitched again with high tenacity 232 polyester thread, with at least 5 stitches to the inch and no more than 6 stitches

Foam Construction: New honeycomb urethane foam combines three densities and three compressions in unique lattice configuration.

VTX 1000 System: New Exclusive 8" wide Velcro holds base units and front units together. Takes stress off the Top Pad. NO UCS LANDING AREA uses a "Skirted Breather Fabric Top" to hold all components together.

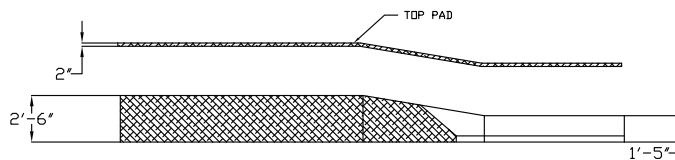
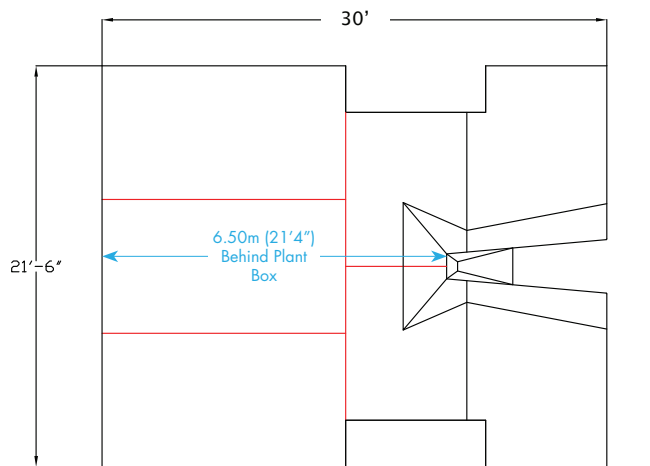
Spike resistant breather fabric: 1000 denier 14 x 12 PVC extruded fabric.

2-inch Foam Top Pad is Standard: Holds entire pit securely in place. Provides safe comfortable landings. Prevents landing between the units.

Coaches Box: 8' x 10' area in contrasting color is sewn onto top pad. Full inner portion of front units highlighted in white to enhance planting area.

Color Option (s): All UCS Landing Areas are available in Red, Purple, Green, Blue, Maroon, Magenta, Orange, Burnt Orange, Yellow/Gold, & Black at no extra Charge.

Meets NFHS, NCAA, Regulations and is World Athletics Certified.



Vinyl Mesh Colors for Landing Areas, Weather Covers, and Base Protection Pads



PROPRIETARY & CONFIDENTIAL
THE INFORMATION CONTAINED ON THIS PAGE IS THE SOLE PROPERTY OF UCS, INC. ANY REPRODUCTION IN PART, OR AS A WHOLE, WITHOUT THE WRITTEN PERMISSION OF UCS, INC., IS PROHIBITED.

1950 POLE VAULT LANDING AREA

ENGINEERED, DESIGNED, AND CONSTRUCTED TO ENSURE A UCS PERFECT FIT.

UCS[®]

MODEL 2100 6.6M X 9.5M X 81CM
(21'6" X 31'1" X 32")

*503-2112 WEATHER COVER FITTED FOR
2100 POLE VAULT LANDING AREA



Pit Measures 6.80m (22'4") Behind Plant Box
World Athletics Certificate No: E-99-0071

Lifetime Guarantee: All handles and straps. Handles are 2 inch 3500 T.C. nylon webbing encased in 21 oz. vinyl knife coated fabric. Handles are sewn to side of pit below zipper flap. Triple reinforced.

15 year Guarantee: On seams and hems against defective material and workmanship.

Angulax 3013 - with exclusive integration system allows front units to be placed on the box collar, providing an angle that accommodates maximum pole bend and a level landing area. Patent pending vault box collar system integration with all UCS landing areas, features a cut-out for placing the box collar, the front units, and extensions allow for a flat landing area that is exclusive to UCS.

UCS Vinyl Material: Sides and Bottoms of all units manufactured out of 21oz knife coated vinyl composed of 5 oz. 840 denier nylon with a 23x23 construction and 16oz of liquid coated urethane that is spread over one side of the nylon material. Results in a 37 oz equivalent that has the highest tear strength in the industry and the most vinyl on the exposed side.

Seams and hems: Double stitched, double folded and double stitched again with high tenacity 232 polyester thread, with at least 5 stitches to the inch and no more than 6 stitches

Foam Construction: New honeycomb urethane foam combines three densities and three compressions in unique lattice configuration.

VTX 1000 System: New Exclusive 8" wide Velcro holds base units and front units together. Takes stress off the Top Pad. NO UCS LANDING AREA uses a "Skirted Breather Fabric Top" to hold all components together.

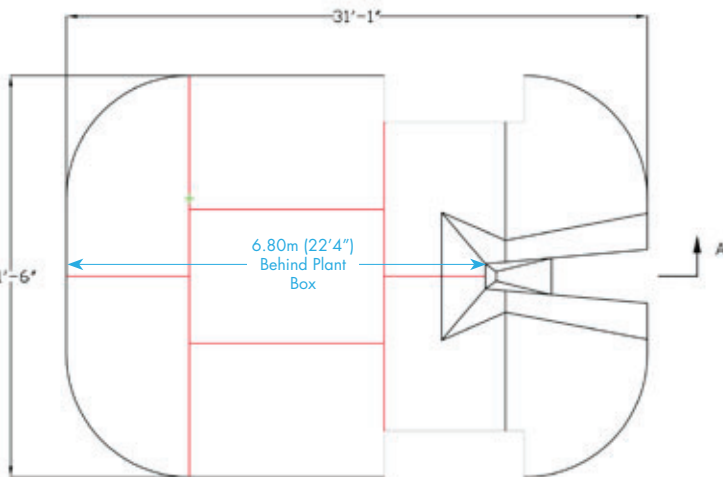
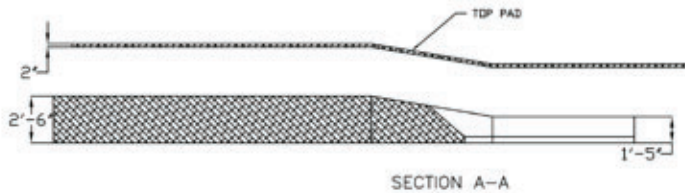
Spike resistant breather fabric: 1000 denier 14 x 12 PVC extruded fabric.

2-inch Foam Top Pad is Standard: Holds entire pit securely in place. Provides safe comfortable landings. Prevents landing between the units.

Coaches Box: 8' x 10' area in contrasting color is sewn onto top pad. Full inner portion of front units highlighted in white to enhance planting area.

Color Option (s): All UCS Landing Areas are available in Red, Purple, Green, Blue, Maroon, Magenta, Orange, Burnt Orange, Yellow/Gold, & Black at no extra Charge.

Meets NFHS, NCAA, Regulations and is World Athletics Certified.

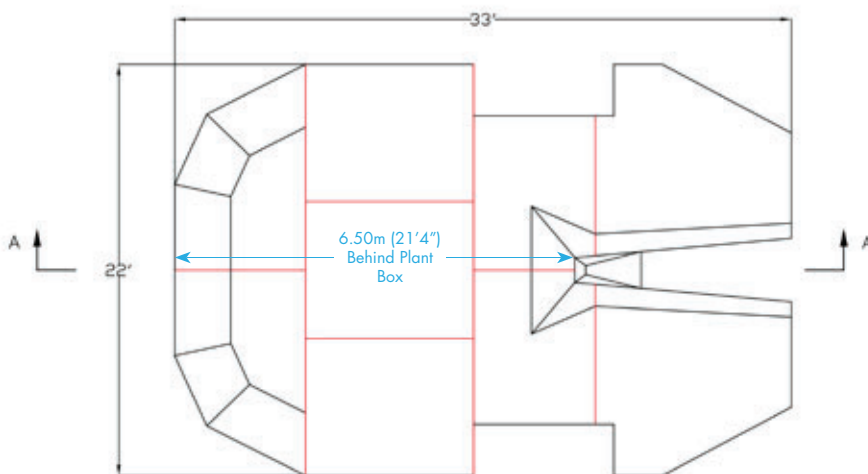
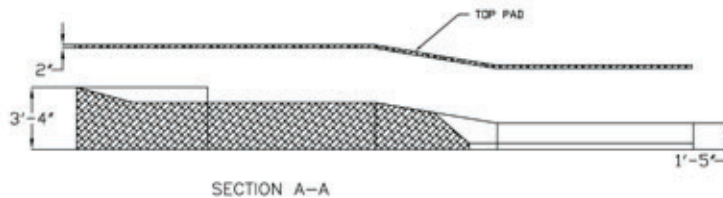


VinylMeshColorsforLandingAreas,WeatherCovers,andBaseProtectionPads



MODEL 2000 6.7M X 10.05M X 81CM
(22' X 33' X 32")

*503-2212 WEATHER COVER FITTED FOR
2200 POLE VAULT LANDING AREA



VinylMeshColorsforLandingAreas,WeatherCovers,andBaseProtectionPads



Pit Measures 6.50m (21'4") Behind Plant Box
World Athletics Certificate No: E-99-0068

Lifetime Guarantee: All handles and straps. Handles are 2 inch 3500 T.C. nylon webbing encased in 21 oz. vinyl knife coated fabric. Handles are sewn to side of pit below zipper flap. Triple reinforced.

15 year Guarantee: On seams and hems against defective material and workmanship.

Angulax 3013 - with exclusive integration system allows front units to be placed on the box collar, providing an angle that accommodates maximum pole bend and a level landing area. Patent pending vault box collar system integration with all UCS landing areas, features a cut-out for placing the box collar, the front units, and extensions allow for a flat landing area that is exclusive to UCS.

UCS Vinyl Material: Sides and Bottoms of all units manufactured out of 21oz knife coated vinyl composed of 5 oz. 840 denier nylon with a 23x23 construction and 16oz of liquid coated urethane that is spread over one side of the nylon material. Results in a 37 oz equivalent that has the highest tear strength in the industry and the most vinyl on the exposed side.

Seams and hems: Double stitched, double folded and double stitched again with high tenacity 232 polyester thread, with at least 5 stitches to the inch and no more than 6 stitches

Foam Construction: New honeycomb urethane foam combines three densities and three compressions in unique lattice configuration.

VTX 1000 System: New Exclusive 8" wide Velcro holds base units and front units together. Takes stress off the Top Pad. NO UCS LANDING AREA uses a "Skirted Breather Fabric Top" to hold all components together.

Spike resistant breather fabric: 1000 denier 14 x 12 PVC extruded fabric.

2-inch Foam Top Pad is Standard: Holds entire pit securely in place. Provides safe comfortable landings. Prevents landing between the units.

Coaches Box: 8' x 10' area in contrasting color is sewn onto top pad. Full inner portion of front units highlighted in white to enhance planting area.

Color Option (s): All UCS Landing Areas are available in Red, Purple, Green, Blue, Maroon, Magenta, Orange, Burnt Orange, Yellow/Gold, & Black at no extra Charge.

Meets NFHS, NCAA, Regulations and is World Athletics Certified.