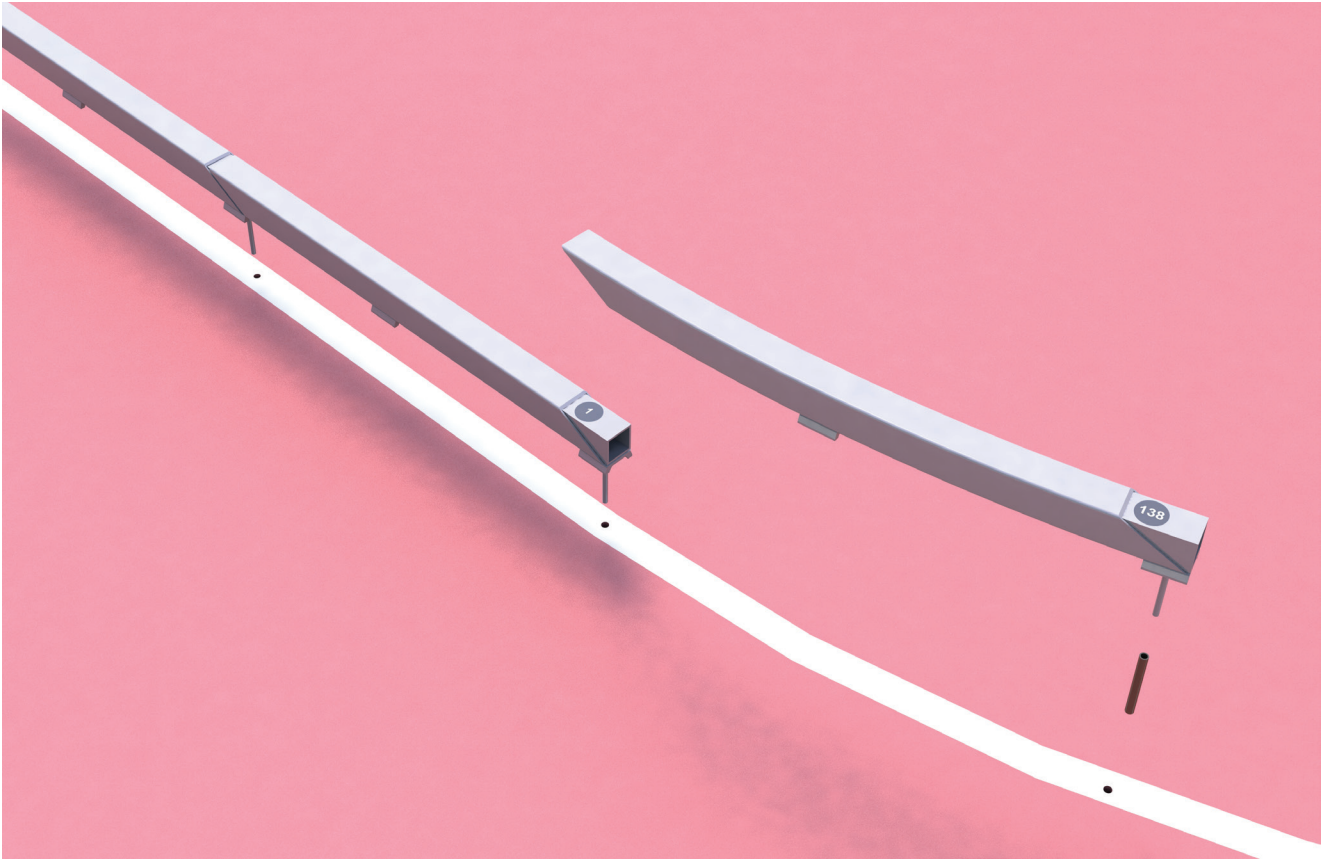




ATHLETIC FACILITIES

CURBING

- Curbing



DESCRIPTION OF COMPONENTS

2" x 2" aluminum square tube with rounded corners Powder coated

3" Interlocking feature to allow perfect fit and accommodate expansion and contraction

Engineered to allow water jump entry and exit, and accommodate javelin runway

2" aluminum pads are attached every 5', raising the curbing ½" off the track

Curbing is custom-made for each individual track using field drawings supplied by the contractor

Curbing is custom-made for each track using field drawings supplied by the contractor

Sections are numbered for ease of installation

COLORS AVAILABLE

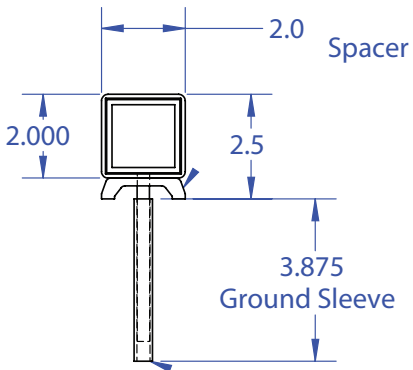
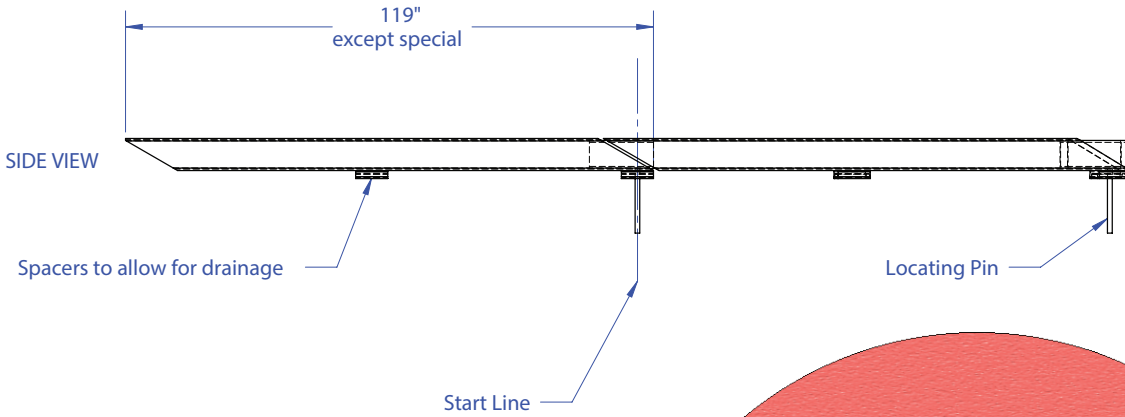
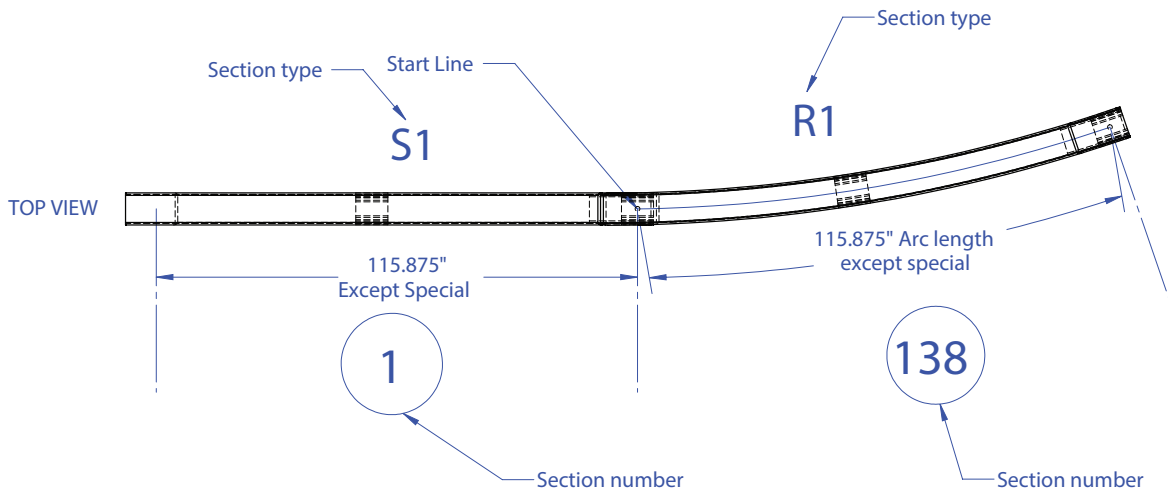
792-9410 Powder-Coated Gold

792-9411 Powder-Coated Silver

792-9412 Non-Powder-Coated

792-9413 White-Powder-Coated

**Available without PINS and SLEEVES or with SPIKES UPON REQUEST*



Hole drilled in track:
Ø 7/16" x 4" deep.

