



ATHLETIC FACILITIES

FOOTBALL GOALS

PLATE MOUNTED

- High School Football Goalposts
- College Football Goalposts
- Professional

GROUND SLEEVE

- High School Football Goalposts
- College Football Goalposts

MODEL 751-1120
HIGH SCHOOL GOAL POST WITH 6' OFFSET

MODEL 751-1120-30
HIGH SCHOOL GOAL POST WITH 30' UPRIGHTS

MODEL 751-6120
HIGH SCHOOL GOAL POST WITH 9' OFFSET AND PLATE SYSTEM

MODEL 751-6120-30
HIGH SCHOOL FOOTBALL GOAL POST WITH 9' OFFSET AND PLATE SYSTEM, 30'

RULE AND STANDARD COMPLIANCE

NFHS

DESCRIPTION OF COMPONENTS

Description and Features:

- High School: 23'4" between uprights
- 6' 0 1/4" gooseneck offset
- Plate System 20" x 20" with Anchor Bolts (4 each Post, 3/4-10)
- Lightweight
- Eyebolts with flags
- Supplied with safety cover for goal base
- Steel Reinforcement in the Crossbar at Gooseneck attachment point
- No exposed hardware to playing surface

Rule and Standard Compliance:

- NFHS

Construction:

- Gooseneck: 6" schedule 40 Aluminum pipe (6 5/8 OD)
- Crossbar: 6" schedule 40 Aluminum pipe (6 5/8 OD) with Steel Insert
- Uprights: 3 1/2" schedule 40 Aluminum pipe (4" OD)
- Safety cover: marine plywood

Finish:

- High impact and corrosion resistant powder coating
- Color: white or yellow

Additional Hardware:

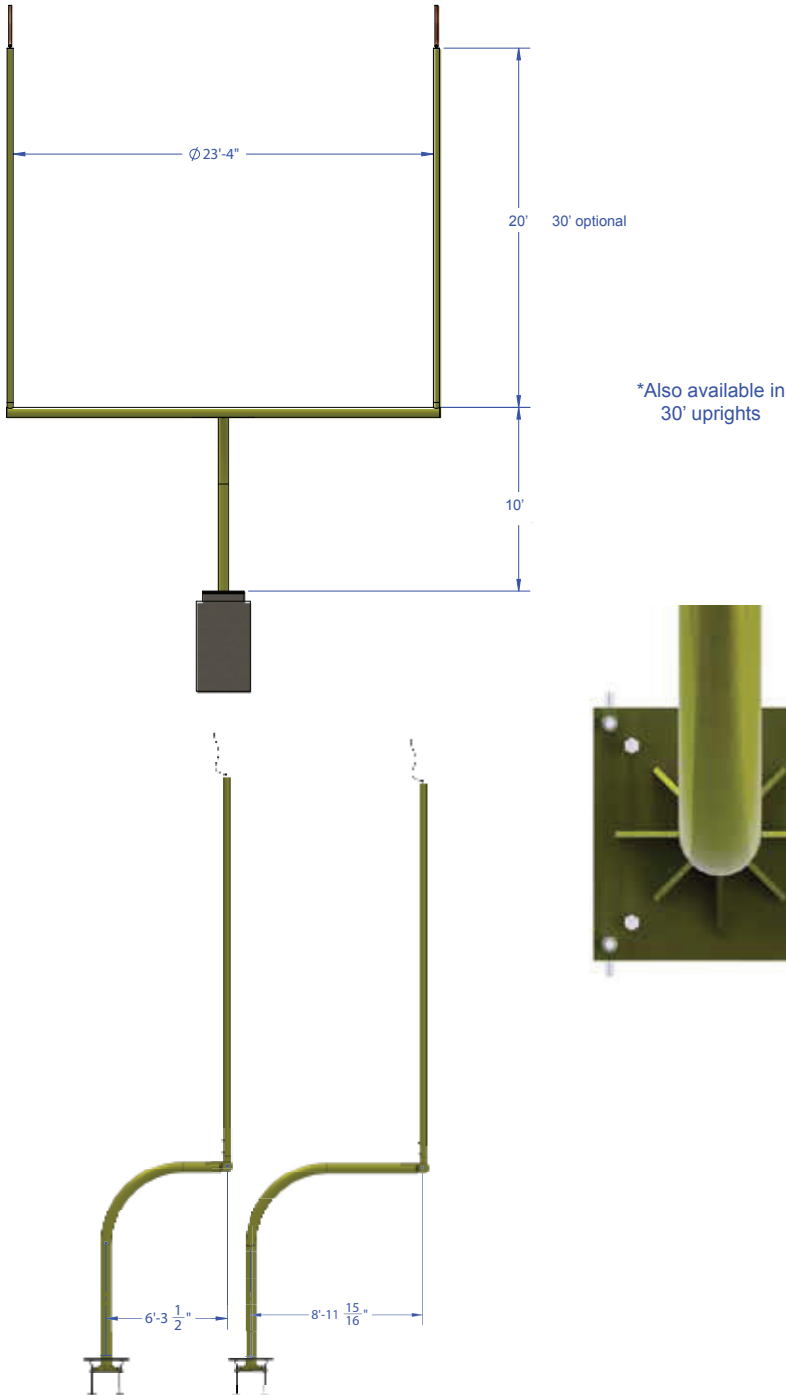
- Stainless steel fasteners
- Flag mounts and flags
- Touch up paint
- Access Kit (Optional)

Installation:

- Follow manufacturers instructions
- Check local codes

Optional 9' High School Goal Post:

- High School: 23' 4" between uprights
- 8' 8 3/4" gooseneck offset- allows for placement of full size soccer goal underneath
- Plate System 20" x 20" with Anchor Bolts (4 each Post, 3/4-10)
- Lightweight
- Eyebolts with flags
- Supplied with safety cover for goal base
- Steel Reinforcement in the Crossbar at Gooseneck attachment point
- No exposed hardware to playing surface



MODEL 751-2120
COLLEGE FOOTBALL GOAL POST WITH 6' OFFSET AND PLATE SYSTEM

MODEL 751-2120-30
COLLEGE FOOTBALL GOAL POST WITH 6' OFFSET AND PLATE SYSTEM, 30' UPRIGHTS

MODEL 751-7120
COLLEGE FOOTBALL GOAL POST WITH 9' OFFSET AND PLATE SYSTEM

MODEL 751-7120-30
COLLEGE FOOTBALL GOAL POST WITH 9' OFFSET AND PLATE SYSTEM, 30' UPRIGHTS

RULE AND STANDARD COMPLIANCE

NCAA

DESCRIPTION OF COMPONENTS

Description and Features:

- College: 18' 6" between uprights
- 6' 0 ¼ " gooseneck offset
- Plate System 20" x 20" with Anchor Bolts (4 each Post, ¾-10)
- Lightweight
- Eyebolts with flags
- Supplied with safety cover for goal base
- Steel Reinforcement in the Crossbar at Gooseneck attachment point
- No exposed hardware to playing surface

Rule and Standard Compliance:

- NCAA

Construction:

- Gooseneck: 6" schedule 40 Aluminum pipe (6 5/8 OD)
- Crossbar: 6" schedule 40 Aluminum pipe (6 5/8 OD) with Steel Insert
- Uprights: 3 ½ " schedule 40 Aluminum pipe (4" OD)
- Ground Plate: 20" x 20" x ½ " Steel
- Safety cover: marine plywood ready to accept Surface (Surface provided by contractor)

Finish:

- All Parts have been sand blasted and finished with a high impact and corrosion resistant powder coating
- Color: white or yellow

Additional Hardware:

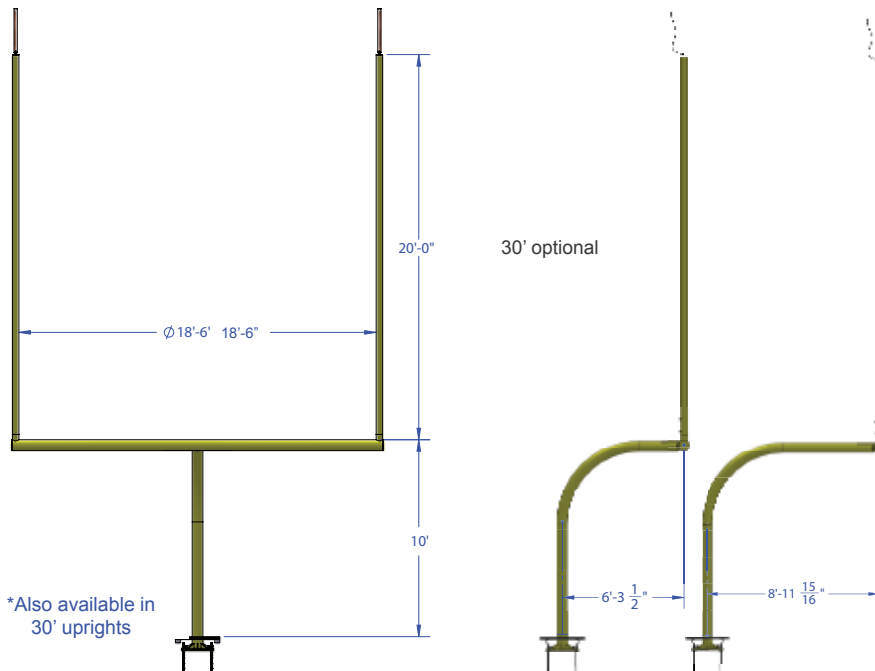
- Stainless steel fasteners
- Flag mounts and flags
- Touch up paint
- Access Kit (Optional Part No. 751-1000)
- Soccer Goal Connector (Optional Part No.751-2000)

Installation:

- Follow manufacturers instructions
- Check local codes

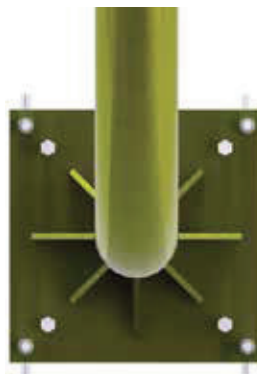
Optional 9' College Goal Post:

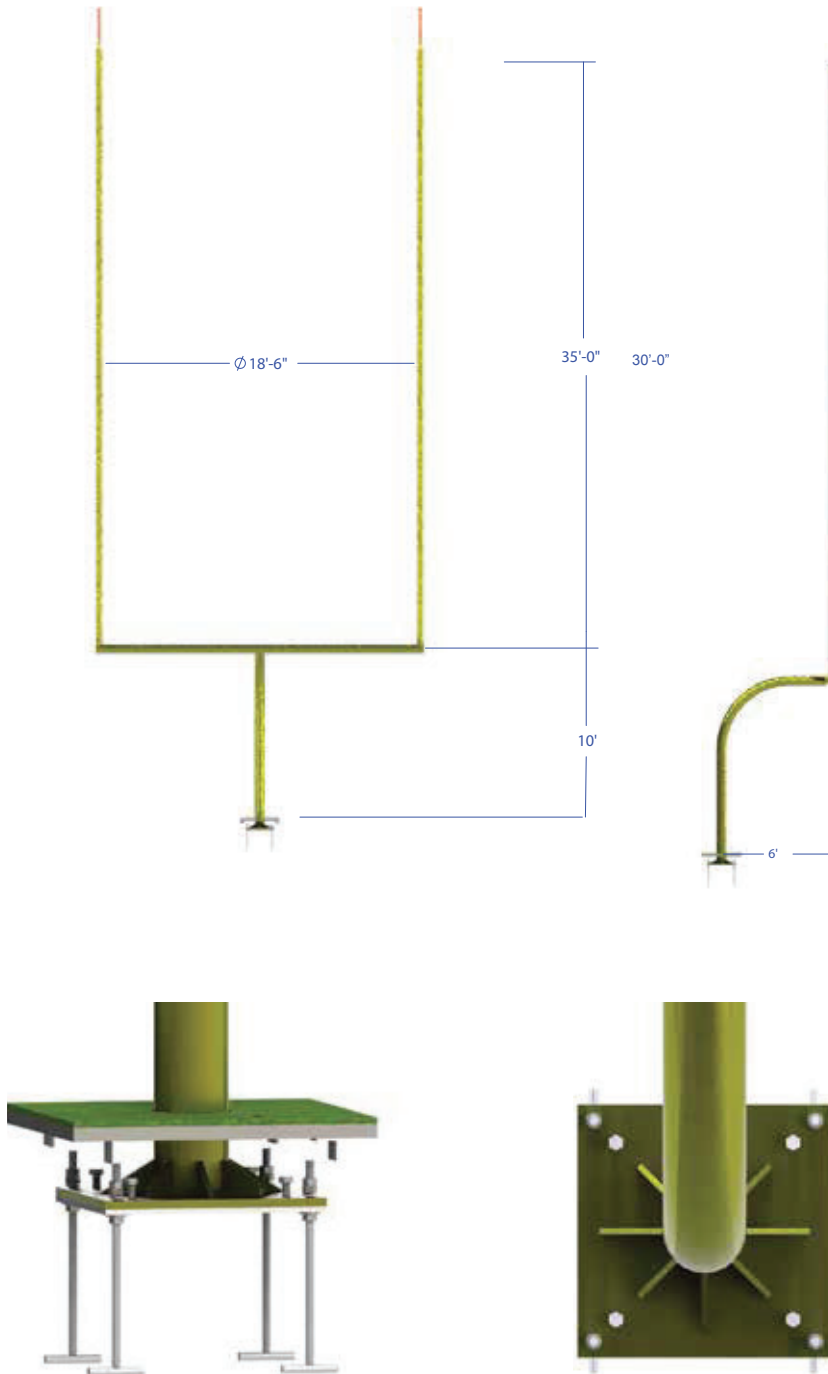
- College: 18' 6" between uprights
- 9' gooseneck offset- allows for placement of full size soccer goal underneath
- Plate System 20" x 20" with Anchor Bolts (4 each Post, ¾-10)
- Lightweight
- Eyebolts with flags
- Supplied with safety cover for goal base
- Steel Reinforcement in the Crossbar at Gooseneck attachment point
- No exposed hardware to playing surface



*Also available in 30' uprights

*ALL MODELS AVAILABLE WITH 30' UPRIGHTS OPTION AT ADDITIONAL CHARGE





DESCRIPTION OF COMPONENTS

Description and Features:

- Professional: 18'6" between uprights with 30' Uprights
- 6'0 ¼" gooseneck offset
- Plate System 20" x 20" with Anchor Bolts (4 each Post, ¾-10)
- Lightweight
- Eyebolts with flags
- Supplied with safety cover for goal base
- Steel Reinforcement in the Crossbar at Gooseneck attachment point
- No exposed hardware to playing surface

Rule and Standard Compliance:

- NFL

Construction:

- Gooseneck: 6" schedule 40 Aluminum pipe (6 5/8 OD)
- Crossbar: 6" schedule 40 Aluminum pipe (6 5/8 OD) with Steel Insert
- Uprights: 3 ½" schedule 40 Aluminum pipe (4" OD)
- Ground Plate: 20" x 20" x ½" Steel
- Safety cover: marine plywood ready to accept Surface (Surface provided by contractor)

Finish:

- All Parts have been sand blasted and finished with a high impact and corrosion resistant powder coating
- Color: white or yellow

Additional Hardware:

- Stainless steel fasteners
- Flag mounts and flags
- Touch up paint
- Access Kit (Optional Part No. 751-1000)
- Soccer Goal Connector (Optional Part No.751-2000)

Installation:

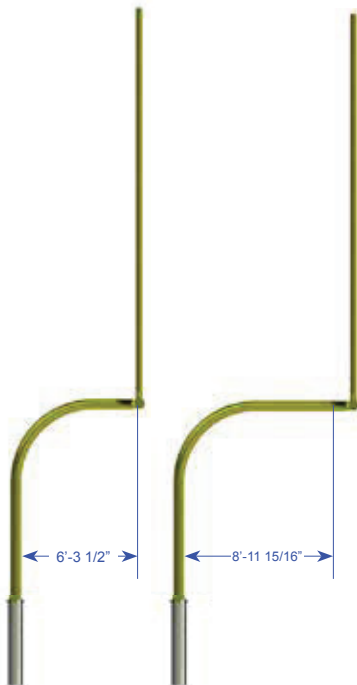
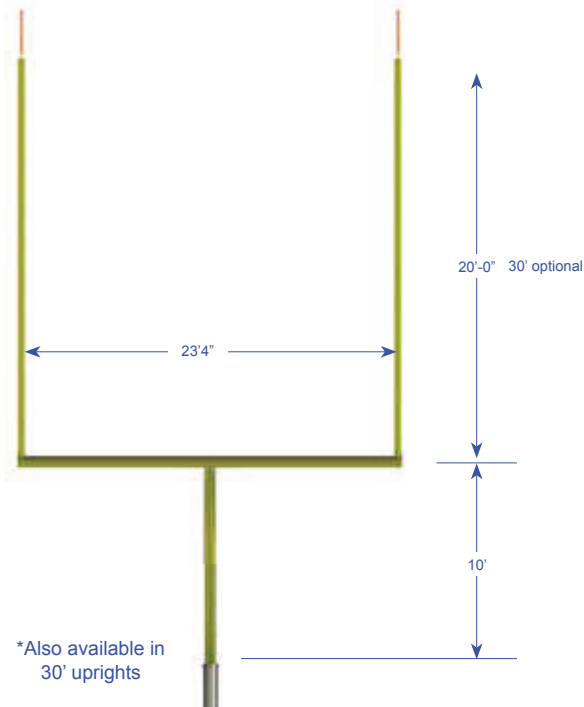
- Follow manufacturers instructions
- Check local codes

MODEL 751-1140
HIGH SCHOOL GOAL POST WITH 6' OFFSET & GROUND SLEEVE

MODEL 751-1140-30
HIGH SCHOOL GOAL POST WITH 6' OFFSET & GROUND SLEEVE- 30' UPRIGHTS

MODEL 751-6140
HIGH SCHOOL GOAL POST WITH 9' OFFSET & GROUND SLEEVE

MODEL 751-6140-30
HIGH SCHOOL GOAL POST WITH 9' OFFSET & GROUND SLEEVE- 30' UPRIGHTS



RULE AND STANDARD COMPLIANCE

NFHS

Description and Features:

- High School: 23'4" between uprights
- 6'0 1/4 " gooseneck offset
- Ground Sleeve with Leveling Bolts
- Lightweight
- Eyebolts with flags
- Supplied with safety cover for goal base
- Steel Reinforcement in the Gooseneck at Field Level and Ground Sleeve Point
- No exposed hardware to playing surface

Rule and Standard Compliance:

- NFHS

Construction:

- Gooseneck and crossbar: 6" schedule 40 Aluminum pipe (6 5/8 OD)
- Uprights: 3 1/2 " schedule 40 Aluminum pipe (4" OD)
- Ground Sleeve: Steel Pipe Schedule 40 (8" OD)
- Safety cover: marine plywood ready to accept Surface (Surface provided by contractor)

Finish:

- All Parts have been sand blasted and finished with a high impact and corrosion resistant powder coating
- Color: white or yellow

Additional Hardware:

- Stainless steel fasteners
- Flag mounts and flags
- Touch up paint
- Access Kit (Optional Part No. 751-1000)
- Soccer Goal Connector (Optional Part No. 751-2100)

Installation:

- Follow manufacturers instructions
- Check local codes

Optional 9' High School Goal Post:

- High school: 23'4" between uprights
- 9' gooseneck offset- allows for placement of full size soccer goal underneath
- Ground Sleeve with Leveling Bolts
- Lightweight
- Eyebolts with flags
- Supplied with safety cover for goal base
- Steel Reinforcement in the Gooseneck at Field Level and Ground Sleeve Point

MODEL 751-2140
COLLEGE FOOTBALL GOAL POST WITH 6' OFFSET AND 5' GROUND SLEEVES

MODEL 751-2140-30
COLLEGE FOOTBALL GOAL POST WITH 6' OFFSET AND 5' GROUND SLEEVES, 30' UPRIGHTS

MODEL 751-7140
COLLEGE FOOTBALL GOAL POST WITH 9' OFFSET AND 5' GROUND SLEEVES

MODEL 751-7140-30
COLLEGE FOOTBALL GOAL POST WITH 9' OFFSET AND 5' GROUND SLEEVES, 30' UPRIGHTS

RULE AND STANDARD COMPLIANCE

NCAA

DESCRIPTION OF COMPONENTS

Description and Features:

- College: 18'6" between uprights
- 6' 0 1/4 " gooseneck offset
- Ground Sleeve with Leveling Bolts
- Lightweight
- Eyebolts with flags
- Supplied with safety cover for goal base
- Steel Reinforcement in the Gooseneck at Field Level and Ground Sleeve Point
- No exposed hardware to playing surface

Rule and Standard Compliance:

- NCAA

Construction:

- Gooseneck and crossbar: 6" schedule 40 Aluminum pipe (6 5/8 OD)
- Uprights: 3 1/2 " schedule 40 Aluminum pipe (4" OD)
- Safety cover: marine plywood

Finish:

- High impact and corrosion resistant powder coating. Each unit is sandblasted before Powder applied.
- Color: white or yellow

Additional Hardware:

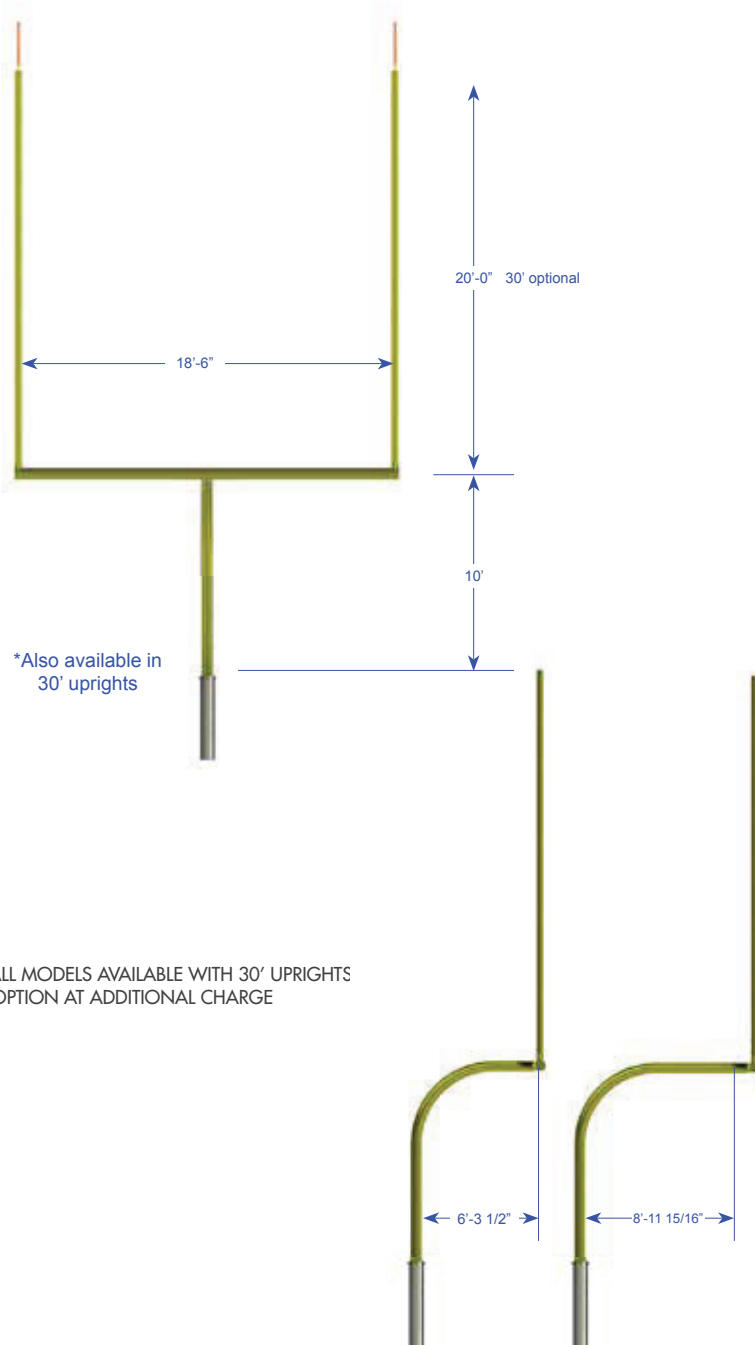
- Stainless steel fasteners
- Flag mounts and flags
- Touch up paint
- Access Kit (Optional)

Installation:

- Follow manufacturers instructions
- Check local codes

Optional 9' College Goal Post:

- College: 18' 6" between uprights
- 9' gooseneck offset- allows for placement of full size soccer goal underneath
- Ground Sleeve with Leveling Bolts
- Lightweight
- Eyebolts with flags
- Supplied with safety cover for goal base
- Steel Reinforcement in the Gooseneck at Field Level and Ground Sleeve Point
- No exposed hardware to playing surface



*Also available in 30' uprights

*ALL MODELS AVAILABLE WITH 30' UPRIGHTS OPTION AT ADDITIONAL CHARGE

Description and Features:

- Provides access to football goal post ground sleeve or ground plate
- Break Formed aluminum construction with Aluminum angle to support Cover Insert

Construction:

- Aluminum Construction
- Break Formed and Welded
- 5" deep x 28 1/2" wide (Inside)
- Cover Insert is 3/4" Synthetic Plywood to accept Synthetic Surface, Paint, or Artificial Grass/ Turf

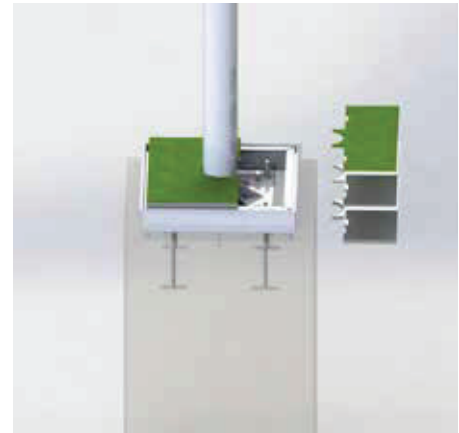
Finish:

- Mill Finish

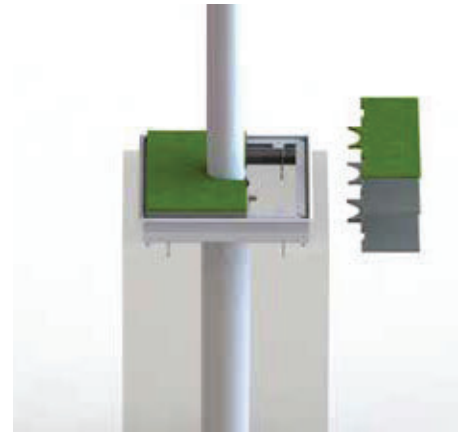
Installation:

- Follow manufacturers instructions
- Check local codes

751-1120 Access Kit Plate Frame :



751-1140 Access Kit Ground Sleeve Frame :



751-1000 Assembled



Description and Features:

- Provides attachment for UCS Soccer Goal Model 900-8024 to Football Goal Post
- Allows for proper anchoring of soccer goal
- Special safety cover for goal base and Goal attachment system

Rule and Standard Compliance:

- NFHS

Construction:

- Stainless Steel

Finish:

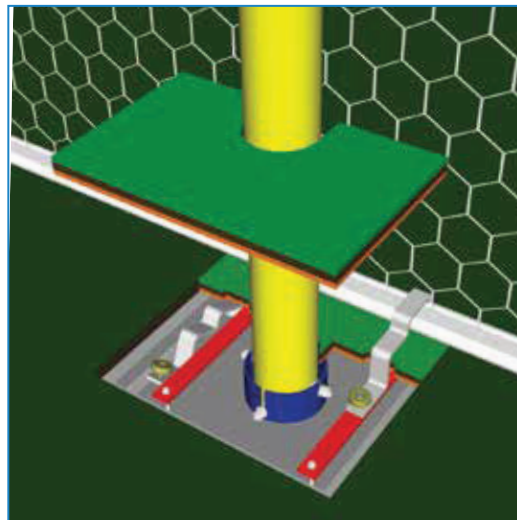
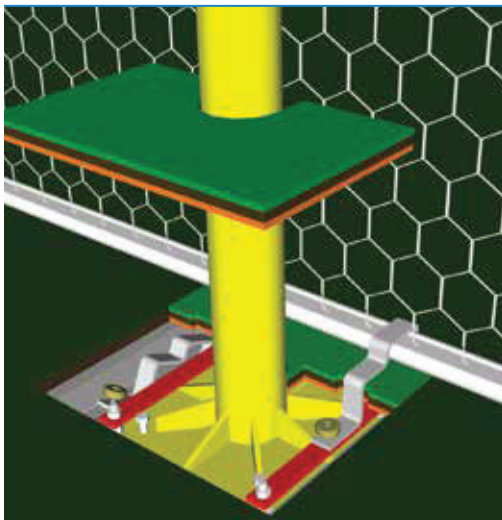
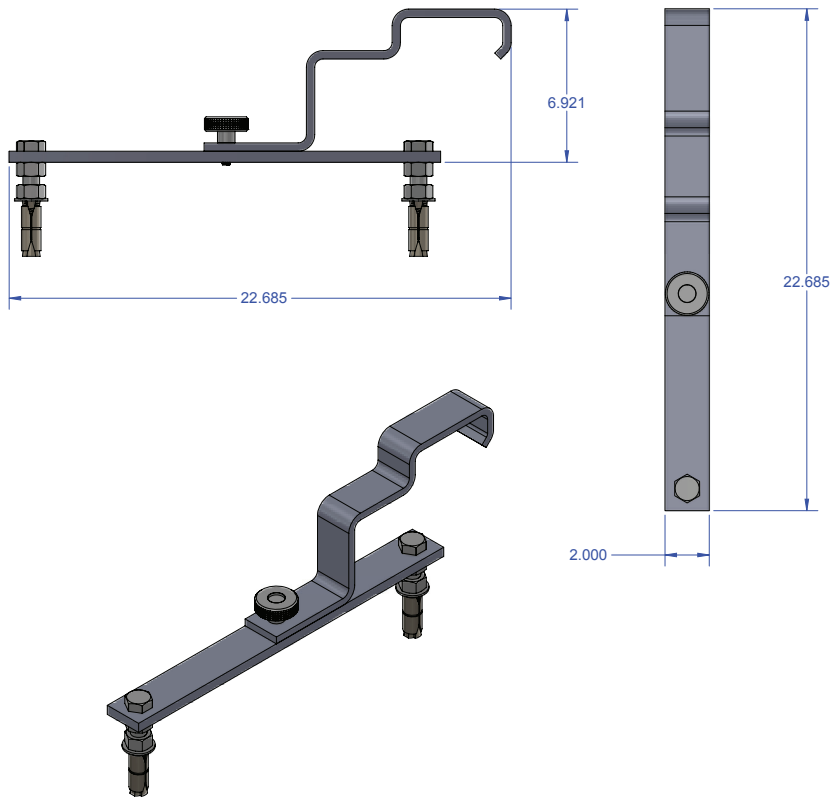
- Powder Coated White
- (Yellow available upon Request)

Additional Hardware:

- Stainless steel fasteners

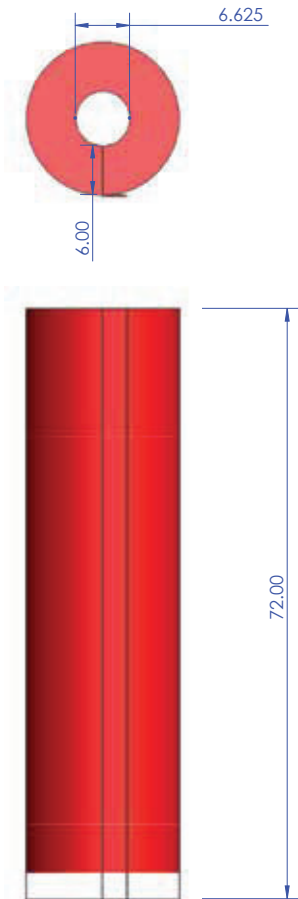
Installation:

- Follow manufacturers instructions
- Check local codes



MODEL 751-67
6' H X 6" THICK

MODEL 751-68
8' H X 6" THICK (NOT COMPATIBLE WITH 8" OFFSET GOALPOSTS)



Description and Features:

- 6" Thick Polyurethane 45 lb. foam with 1.8 lbs per cubicfoot density
- Cover is a 21 oz Knife coated material available in colors (see below)
- Vinyl fabric contains anti-bacterial & anti-fungal inhibitors
- Vertical Custom artwork or lettering available
- 2" Velcro Fastening System
- Lightweight

Construction:

- Geotextile polypropylene fabric with a 21 oz knife coated vinyl border (yellow) which houses internal chain to weight the perimeter of the cover.

Finish:

- Colors Available: White, Yellow, Orange, Red, Turquoise, Grey, Green, Brown, Burgundy, Purple, Dark Red, Black, Royal Blue, Navy Blue, Kelly Green, Tan, Light Blue, Texas Orange, Maroon

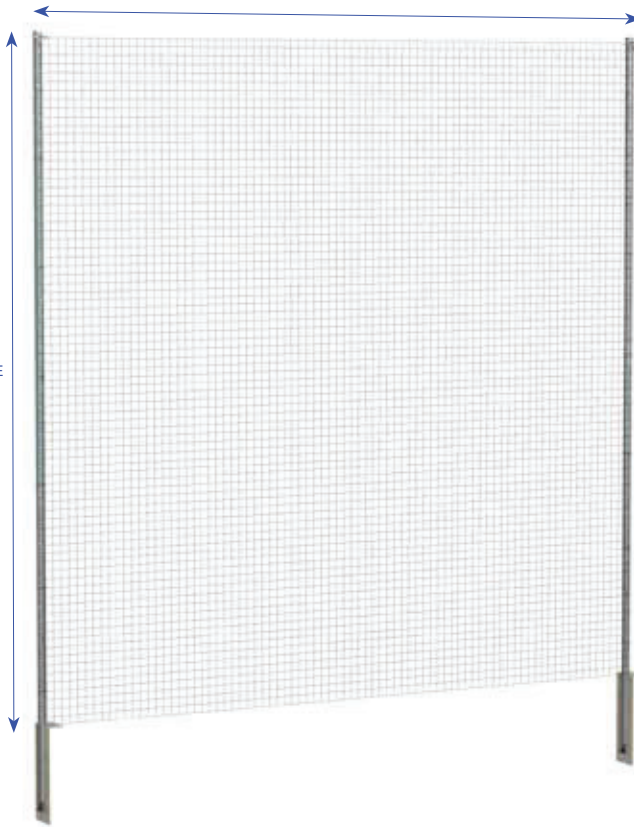
Optional:

- Lacing Fastening system available (Consult Factory for model number)
- Logo applications available



TYP. 40'
LINEAR FOOTAGE
DETERMINED BY DESIGN

TYP. 40'
VERTICAL FOOTAGE
DETERMINED BY
DESIGN



DESCRIPTION OF COMPONENTS

Description and Features:

- 40' Ball Stopper Post Height limits errant or stray balls around athletic fields and complexes.
- Made with typical spacing between each post of 40'
- Straight Upright Post
- Clear Coated Cable runs along the top and bottom providing tension and reducing net sag.
- Nets are a treated 43mm 1 3/4" mesh size
- Posts feature a rope Storage Cleat and Pulleys to assist in raising and lowering the net
- 45 Degree angle ground sleeve prevents twisting of post
- Retaining rings secure net to uprights along full height of the post

Construction:

- Posts: 6" diameter x 1/4" Thick 45' in overall length. The posts are installed vertically and slide into and out of the Ground Sleeves for easy Assembly or Takedown for off-season storage. Included are Aluminum Caps for the Ground Sleeves for when Ball Stopper is not set up.
- Ground Sleeves: 60" powder coated aluminum ground sleeves are finished with a 45-degree base, uprights cut to match 45-degree base locking posts into correct position.
- Net: Heavy Duty 43mm Nylon Netting. Includes Ropes for raising and lowering.

Finish:

- Mill Finish Posts- Powder Coat Available (590-3409)

Installation:

- Follow manufacturers instructions
- Check local codes